

## General Commissioning Policy

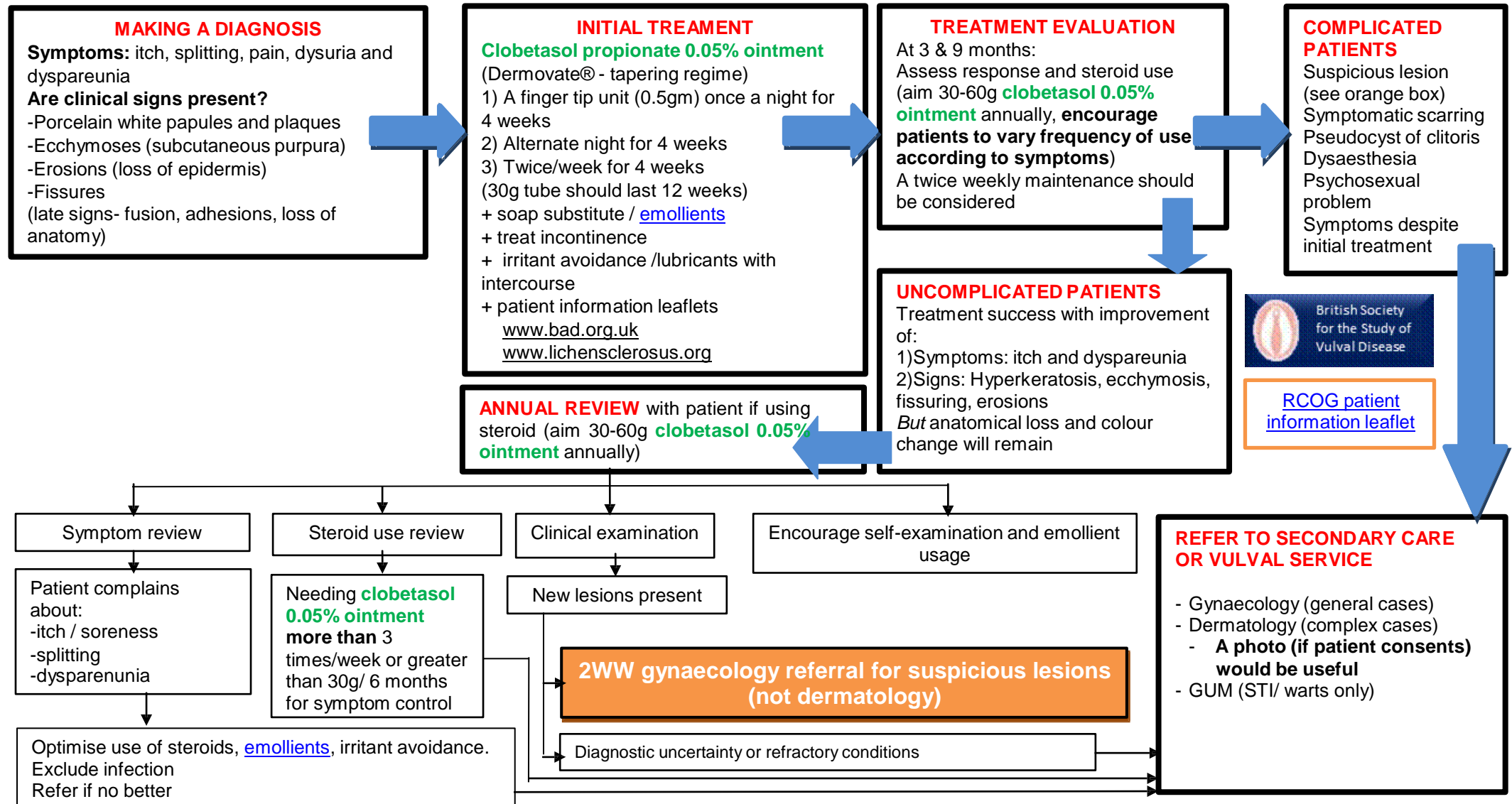
<b>Treatment</b>	<b>Vulval disorders</b>
<b>For the treatment of</b>	<b>Vulval disorders</b>
<b>Background</b>	<p>NHS Scarborough and Ryedale CCG (SRCCG) commissions' healthcare on behalf of its local population across primary, secondary and tertiary care sectors. Commissioning policy including clinical referral pathways and thresholds have been developed and defined using appropriate NICE guidance and other peer reviewed evidence and are summarised here in order to guide and inform referrers.</p> <p>This commissioning policy is needed in order to clarify the criteria for vulval disorders.</p>
<b>Commissioning position</b>	<p><b>Definition</b> Commonly present with pruritis and pain</p> <p><b>Exclude red flag symptoms</b> Vulval ulceration or increasing lesion of vulval skin – refer 2WW fast track</p> <p><b>General Points</b> See attached flow chart</p>
<b>Management</b>	<ul style="list-style-type: none"> <li>• <a href="#">Exclude vulval candidiasis</a></li> <li>• Examine vulval, perianal area, vagina, cervix</li> <li>• Look for any evidence of systemic illness by examining rest of skin and oral mucosa</li> <li>• Commonest vulval disorders are: <a href="#">Lichen sclerosus – for management see below</a> <a href="#">Atrophic vulvovaginitis</a></li> </ul> <p><b>Indications for referral</b></p> <ul style="list-style-type: none"> <li>• Lesions or conditions not responding to management</li> </ul>
<b>Investigations prior to referral</b>	<ul style="list-style-type: none"> <li>• Consider TFT/HbA1C</li> <li>• Consider vulval swabs</li> </ul>
<b>Information to include in referral letter</b>	<ul style="list-style-type: none"> <li>• Description of vulva and any lesion</li> <li>• Smear history</li> <li>• Relevant past medical/surgical history</li> <li>• Current regular medication</li> <li>• BMI</li> <li>• Smoking status</li> </ul> <p><b>Desirable information</b> Any treatment tried</p>

<b>Patient Information / PDA</b>	<a href="http://patient.info/health/vulval-problems-leaflet">http://patient.info/health/vulval-problems-leaflet</a>
<b>Date reviewed</b>	January 2017
<b>Next Review Date</b>	2019
<b>Contact for this policy</b>	CCG Service Improvement Team <a href="mailto:scrccg.rssifr@nhs.net">scrccg.rssifr@nhs.net</a>

**References:**

1. Management of Vulval Skin Disorders – RCOG Green-top guideline 58 2011
2. British Association for Sexual Health and HIV BASHH – Guideline on Management of Vulval Conditions

# VULVAL LICHEN SCLEROSUS- GUIDANCE FOR HEALTH CARE PROFESSIONALS (HOSPITAL TEAM OR GP SPECIAL INTEREST)



Responsible GP – Dr Omnia Hefni, SRCCG	Approved: February 2017
Responsible Consultant – Ms Louise Hayes, YHFT	Date published: February 2017
Responsible Pharmacist – Ms Rachel Ainger, SRCCG Medicines Mngt	NHS Scarborough & Ryedale Clinical Commissioning Group

